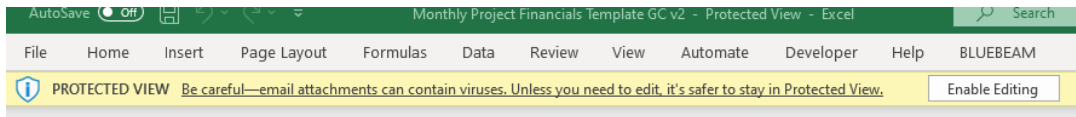


Standard Operating Procedure (SOP/SSOG) GC Forecast Tool – Initial Setup

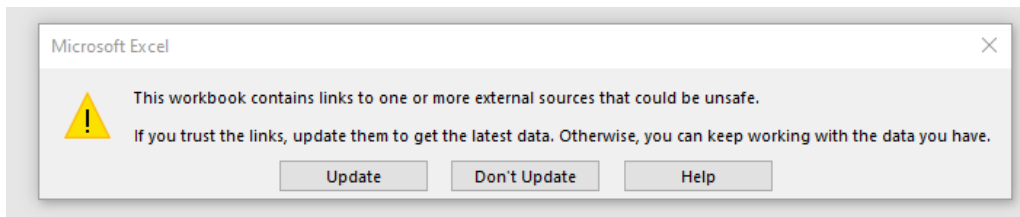
October 2023

1. Step 1: Open File and Enable Editing

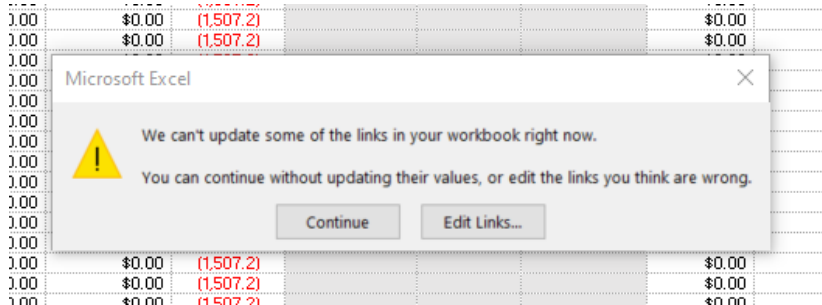
Select Enable Editing from the top bar



2. Update Links



3. Continue with Updates



4. Enter Project Number of Profit Plan Tab



Project Information	
Project Name	
Project #	
Market	▼
Construction Start Date	


8. Select “Run” for the Native Database Query Prompt (2-3 times)

✕

Native Database Query

Do you approve running this native query? Your approval will also apply to any occurrences of the same native query in other documents.

Native queries may be unsafe and alter the database. Because native queries may be rerun multiple times, those which do alter the database may result in incorrect or unpredictable behavior.

 rgbazvp;Viewpoint

```
SELECT zzv_Nikki.Mth, zzv_Nikki.Job, zzv_Nikki.Phase, Sum(zzv_Nikki.ActualCost) AS 'Sum of Sum(zzv_Nikki.ProjCost) AS 'Sum of ProjCost' , zzv_Nikki.JCJP_Description FROM Viewpoint.dbo.zzv_Nikki zzv_Nikki GROUP BY zzv_Nikki.Mth, zzv_Nikki.Job, zzv_Nikki.Phase, zzv_Nikki.JCJP_Description, zzv_Nikki.HAVING (zzv_Nikki.JCCo=1) AND (zzv_Nikki.Phase<' 2000- -') ORDER BY zzv_Nikki.Phase
```

[Learn more about native database queries](#)


9. Change Privacy Level Checks to “Organizational” and click “Ignore”


✕

Privacy levels

The privacy level is used to ensure data is combined without undesirable data transfer. Incorrect privacy levels may lead to sensitive data being leaked outside of a trusted scope. More information on privacy levels can be found [here](#).

Ignore Privacy Levels checks for this file. Ignoring Privacy Levels could expose sensitive or confidential data to an unauthorized person.

 rgbazvp Organizational ▾

 Current Workbook Organizational ▾

