



Dove Valley Quannah

PRE-MORTEM RISK MITIGATION

Project Overview



QUANNAH PARTNERS – NEW CLIENT

Denver-based real estate investment firm

Residential, Industrial and Retail Experience



Project Director – **Jason Somers**

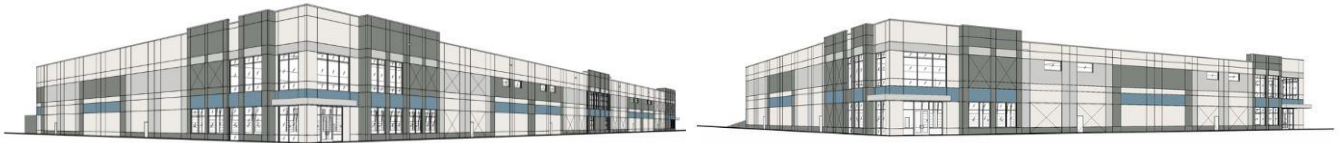
Project Manager – **Andrew Zehnder**

Project Engineer – **Cullen Morris**

Project Superintendent – **Colin McKennan-Radler**



Project Overview



2 TILT-UP SPEC WAREHOUSES

BUILDING #1 – 140K SF

BUILDING #2 – 55K SF

LOT SIZE – 15 ACRES

OWNER..... QUANNAH PARTNERS

CM..... POST GROUP

A/E TEAM

ARCHITECT..... WARE MALCOMB

STRUCTURAL..... PEAK ENGINEERING

MECHANICAL..... THOMPSON ENGINEERING

ELECTRICAL..... AE DESIGN

CONTRACT

CONTRACT TYPE..... COST PLUS W/ GMP

CONTRACT VALUE..... \$16.27M

Project Overview

Project Schedule / Milestones

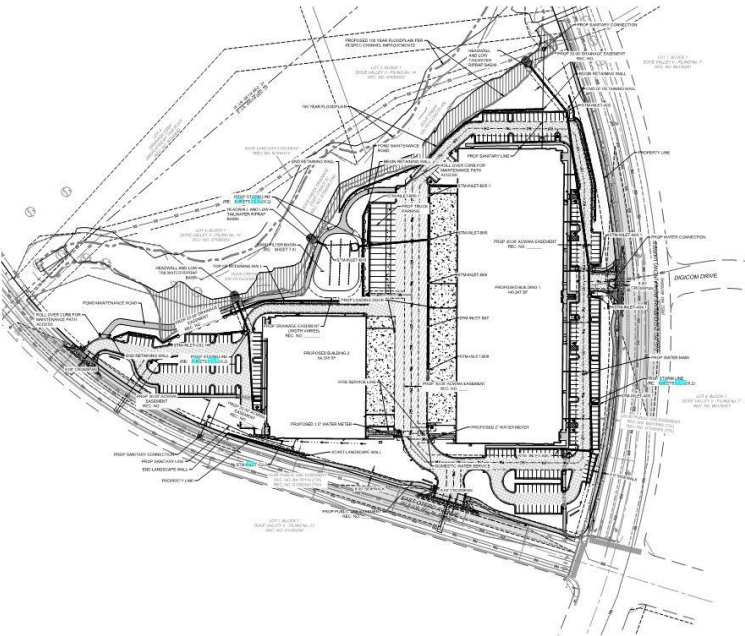
Project Duration 10 Months

Earthwork Begins May 1st **

Foundations Begin May 31st
Steel Delivery October 14th
Structure Complete November 24th
Building Dry-In December 15th
MEP Complete January 12th

Substantial Completion January 28th, 2023

Final Completion March 9th, 2023



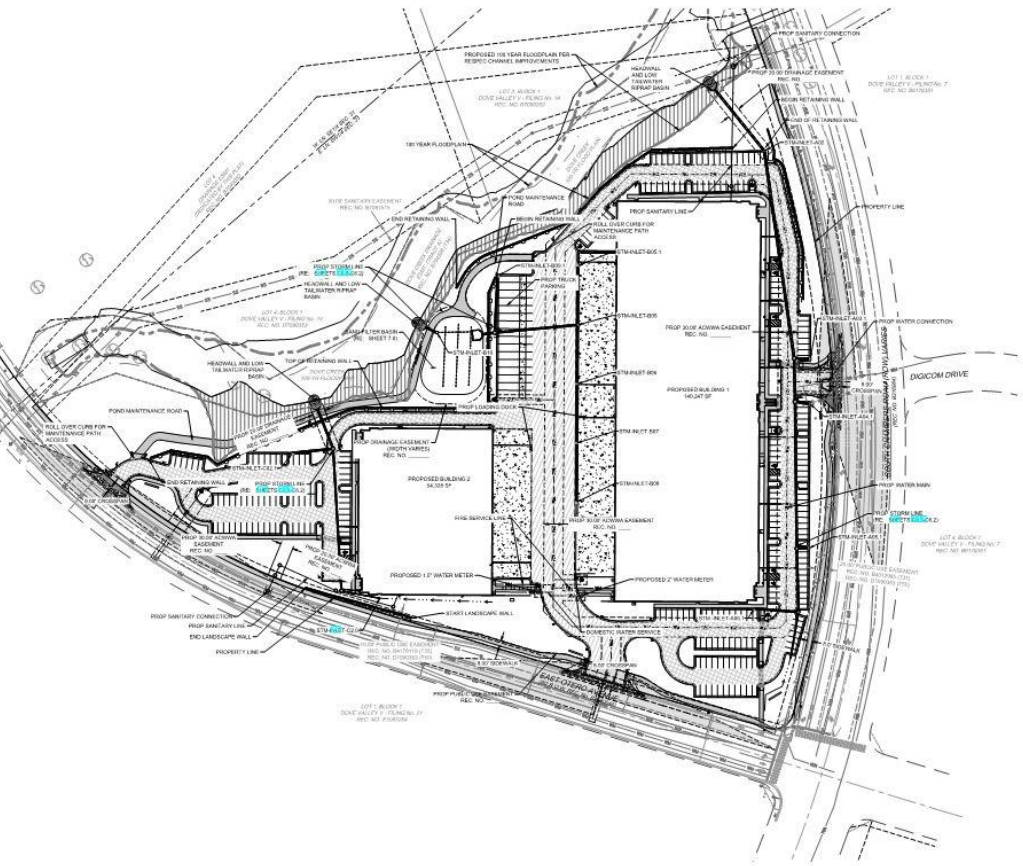
Major Subcontractors

<u>Scope</u>	<u>Subcontractor</u>	<u>Scope</u>	<u>Subcontractor</u>
Earthwork	GTH	Roofing	Bauen
Asphalt	Mountain States	Storefront	EAP Glass
Utilities	Summers	OH Doors/Dock Equipment	OGD Equipment
Retaining Walls	Integrated Wall	Painting	Messer
Landscape / IR	NuStyle	Fire Protection	Elevation
Concrete	Panel Masters	Plumbing	Freund
Structural Steel	RK Steel	HVAC	Clear Creek
Joist & Deck	New Millennium	Electrical	Core Electric
Steel Erection	Phaze		

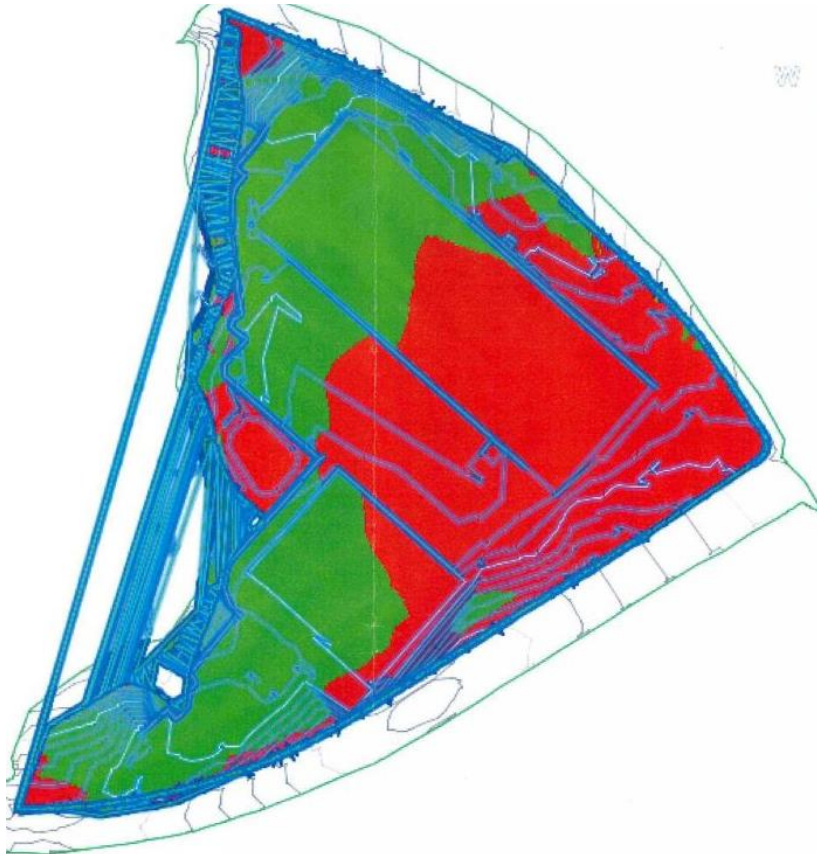
Project Location



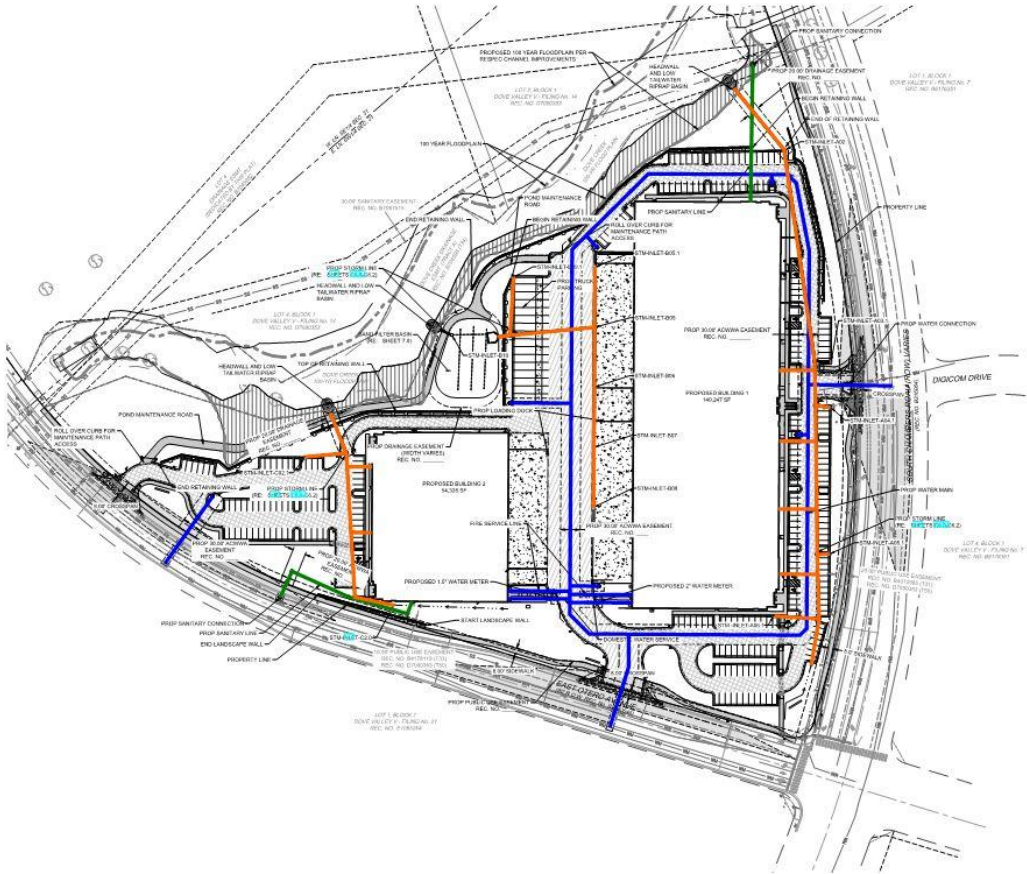
Sitework



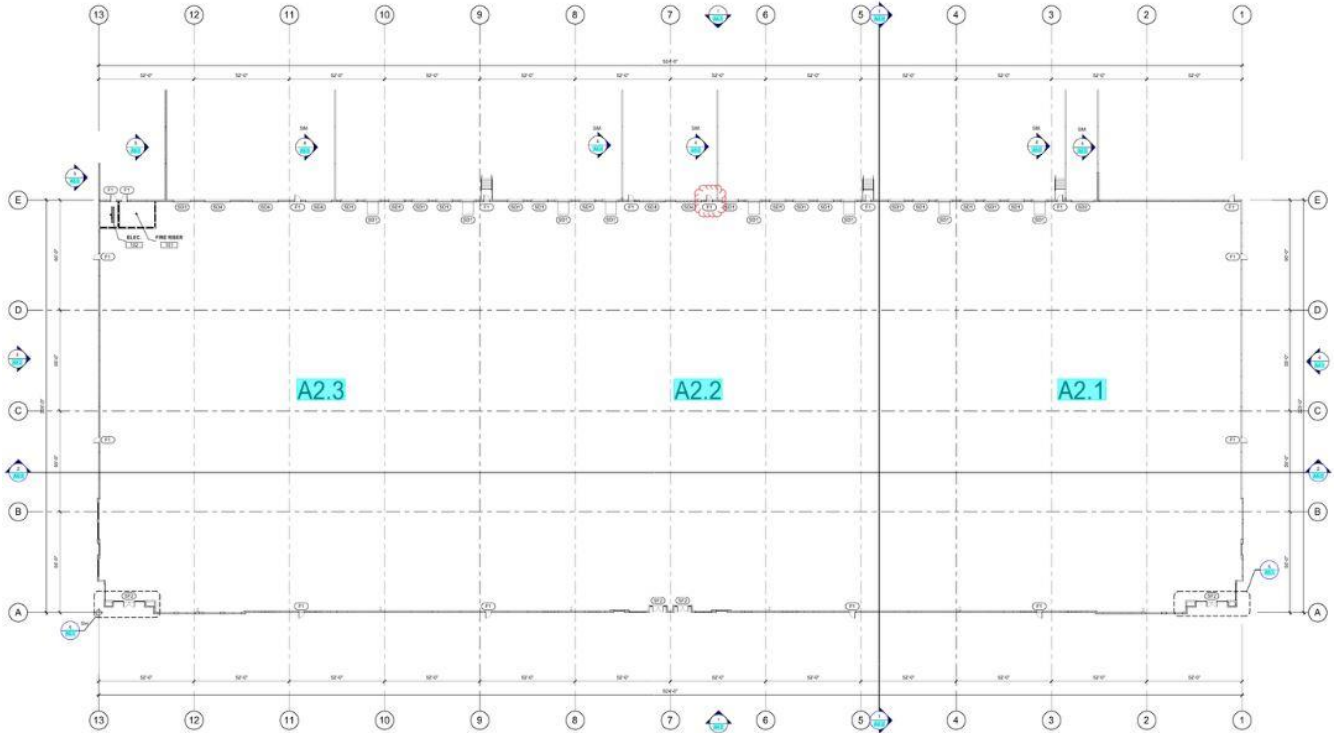
Sitework – Cut/Fill



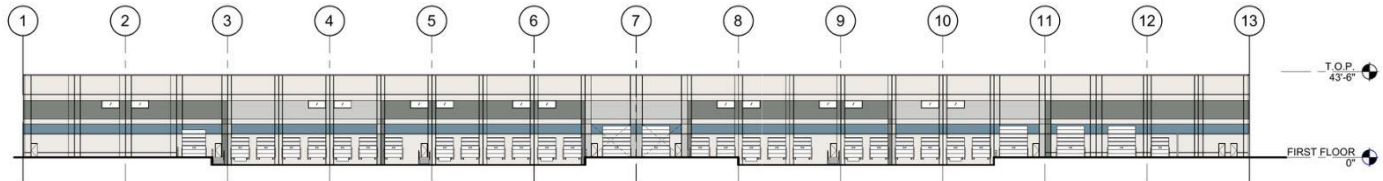
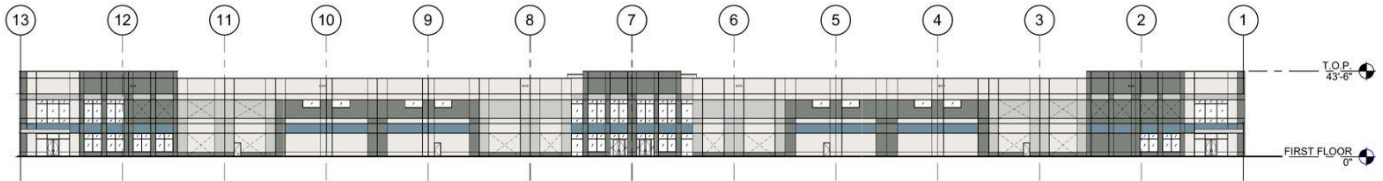
Sitework - Utilities



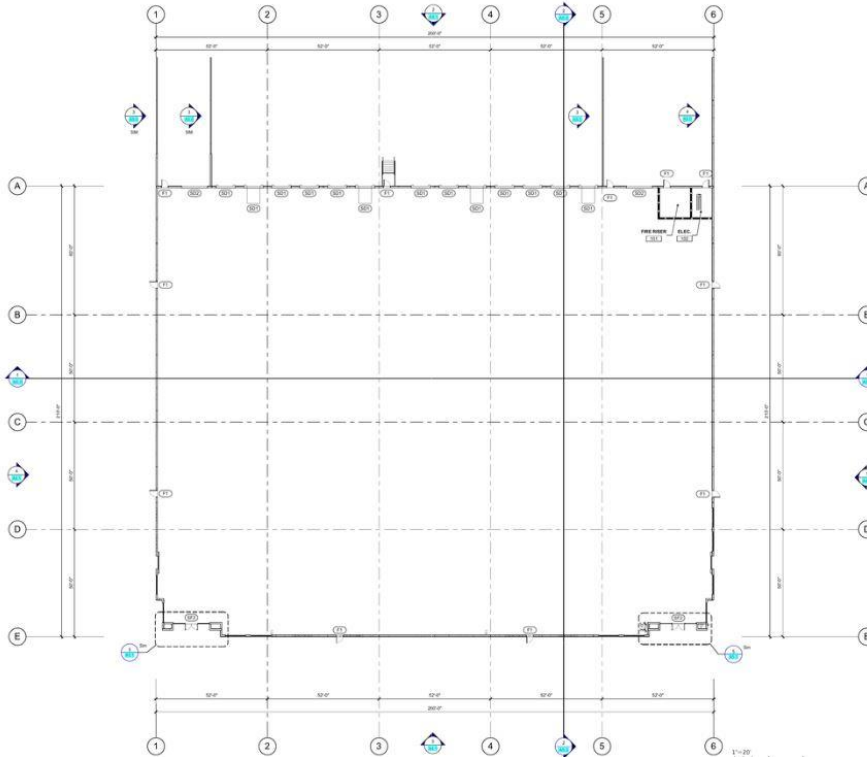
Building #1 – Floor Plan



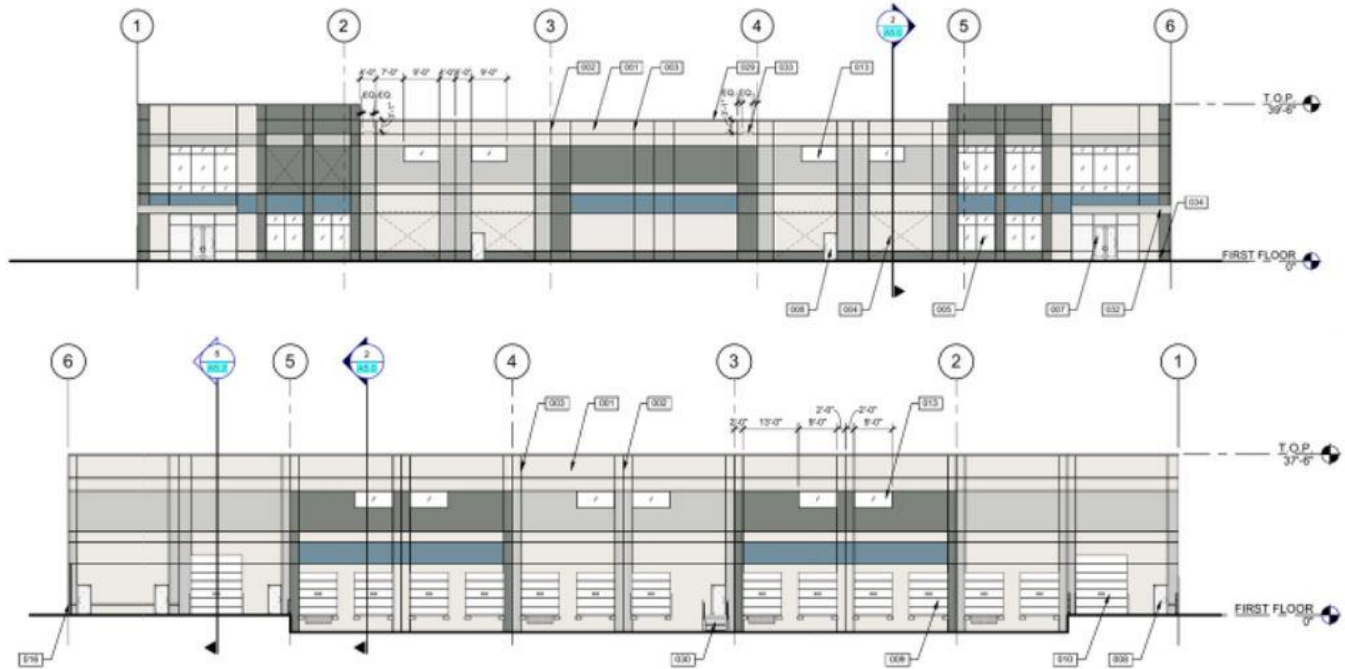
Building #1 - Elevations



Building #2 – Floor Plan



Building #2 - Elevations



Potential Risks

- Retaining Wall Install – **Critical Path**
- Material Availability/Escalation Costs - **Oil / Gas Increases**
- Push to Pave Before Winter
- New Subcontractors – **Summers / Messer**